



NCMS/InfoTEST International Enhanced Product Realization Testbed Phase 2

Strategies For Using the Internet for Secure Business Collaboration





Today's Agenda

- * Bill Estrem - D. H. Brown
- * Bill Petefish - Caterpillar
- * Lance Travis - DASCUM
- * Scott Torvik - FileNET
- * Brian Handspicker - WebEnable
- * Jack Tozier - Sprint
- * Bill Neill - Hewlett Packard

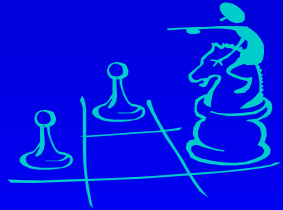
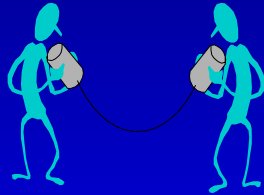
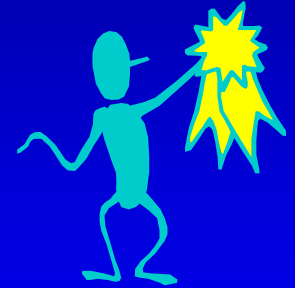
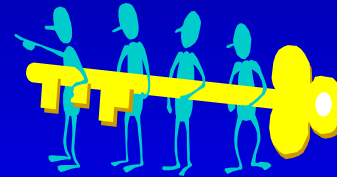
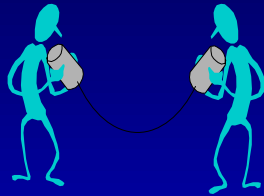
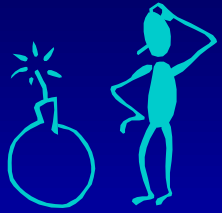


Critical Business Drivers

- * Enhanced Supply Chain Relationships
- * Effective Product Lifecycle Management
- * Customer Focus/Responsiveness
- * Flexibility And Agility
- * Return On Investment
- * Risk Management



The EPR Scenario



1

2

3

4

5



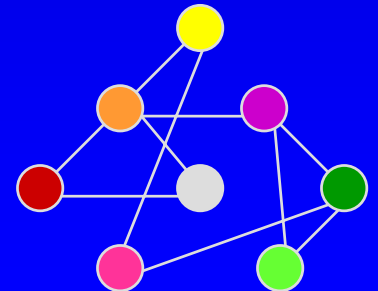
EPR - Key Capabilities

- * Enabling Secure Virtual Organizations
- * Team Development & Collaboration
- * Leveraging Interorganizational Resources
- * A Flexible and Coherent Infrastructure



Enhanced Collaboration

- * Improving Product Cycle Time
- * Enabling the Supply Mesh
 - * Integration of Data and Applications
 - * Collaborating With Smaller Suppliers
 - * Improved Interaction With The Customer
 - * Beyond EDI





EPR Phase 1 Review

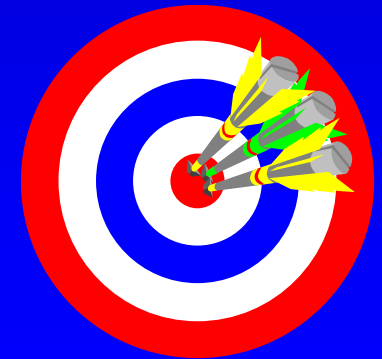
- * Scenario Successfully Completed
 - * Demonstrated Elementary Connectivity Across Multiple Organizations
 - * Raised Numerous Challenges To Be Addressed In Phase 2

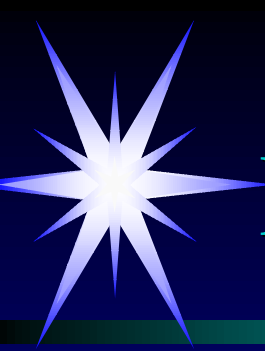




EPR Phase 2

- * Enhanced Collaborative Capability
 - * Richer Multimedia and Groupware Tools
 - * Spanning Organizational Cultures and Policies
 - * Enabling Heterogeneity At Many Levels
 - * Quality of Service/Protection
- * Comprehensive Metrics



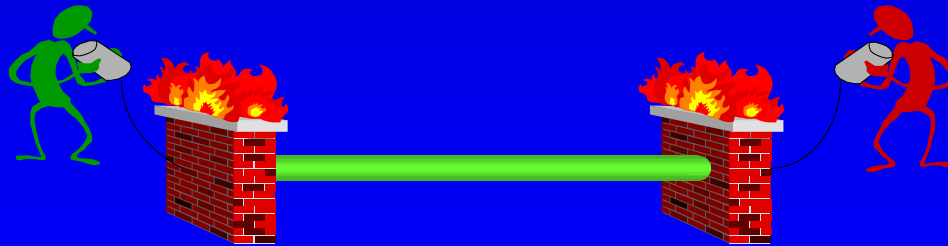


EPR2 Application Suite

- * Realtime Multimedia/Conferencing Tools
 - * MDL Communique!
- * Web-based Data Access/Management Tools
 - * WebEnable Dealer Channel Automation
 - * FileNet @Mezzanine
- * Collaborative Engineering Tools
 - * HP Shared 3D Viewer

EPR2 Infrastructure

- * Internet and Private WAN Access
- * Router and Firewall with VPN Capability
- * DCE Core Services
- * DCE and Public Key Security





Current Project Status

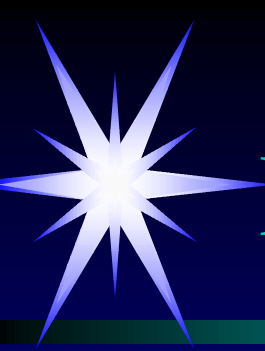
- * Stage 1 - Simulated WAN
- * Stage 2 - Private WAN
- * Stage 3 - Internet

- * Plan To Complete EPR2 This Month
- * Follow On Activites Under Consideration



Summary

- * The Enhanced Product Realization Testbed Project Is Evaluating the Business Value Of Internet-based Collaborative Engineering
- * Organizations Can Leverage Collaborative Technologies To Improve Their Business Processes



EPR2 Project Participants

- * 3M
- * Bay Networks
- * Caterpillar
- * DASCUM
- * D.H. Brown Assoc.
- * FileNet
- * Hewlett Packard
- * Oak Ridge National Laboratory
- * Sprint
- * Texas Instruments
- * WebEnable

